



Installation Guide

Global System



The Nblade, Gcube and Atscoll software products have a high-profile technical support system: inside the web management console, in the System menu, you can find the choice "UPDATES". Using this function you will have the possibility, by undersigning the annual support subscription (included in the price for the first year), to update the product with the new functions and eventual corrections of any existing problems.



This service is supported by a technical support forum to report eventual problems or to suggest ways to better the product.

FORUM <http://support.gls-net.net>



CONTENTS

CDRom Boot (STEP 1)	Pag. 3
Select Installation Language (STEP 2)	Pag. 4
Start Installation (STEP 3)	Pag. 4
Installation Progress (STEP 4)	Pag. 5
Finish Installation (STEP 5)	Pag. 5
First Run of Nblade System (STEP 6)	Pag. 6
Web Console (STEP 7)	Pag. 7
Change IP Address (STEP 8)	Pag. 8
Change Root Password (STEP 9)	Pag. 11
License Activation (STEP 10)	Pag. 11

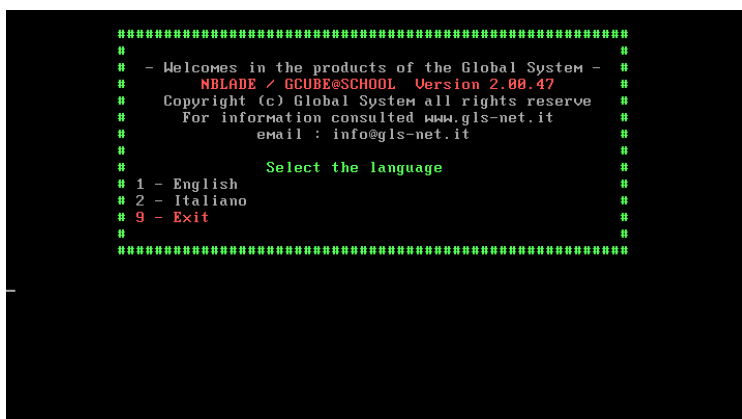


- Installation STEP 1

Turn on the Server and insert the Nblade CD into the proper optic CD / DVD reader. The CD boot should automatically appear; if not, check the "primary boot cd/dvd" option in the server Bios.



- Installation STEP 2



Type 1 or 2 to choose the desired language, or choose 9 to cancel installation.

Click ENTER to go to the next step.



- Installation STEP 3

```
*****
                          Trovato HardDisk
*****
Disk /dev/hda: 3221 MB, 3221225472 bytes
16 heads, 63 sectors/track, 6241 cylinders
Units = cylinders of 1008 * 512 = 516896 bytes

   Device Boot      Start         End      Blocks   Id  System
*****
Tutti i dati verranno persi
Proseguire con l'installazione di NBLADE YES/[NO] ?_
```

CAREFUL: If you proceed with installation, all contents of your Hard Disk will be erased.

Type "YES" to go ahead with the installation.

If your Hard Disk is not new (already partitioned) you will be asked to restart the installation to allow the installation of the Nblade system to finish.

```
Creazione partizioni OK - è necessario riavviare la procedura di installazione
Premere ENTER per riavviare
```

Click ENTER. Repeat the installation in STEP 1.



- Installation STEP 4

Creation of the Nblade system partitions.

```
Ricerca disco fisso...
Tipo HDD /dev/hda :
#####
#
# PREPARAZIONE ALLA FORMATTAZIONE AUTOMATICA DEL DISCO /dev/hda #
#
#####
Inizio Installazione sistema NBLADE...
La dimensione dell'Hard Disk è /dev/hda : 3071 MB
Creazione partizione /dev/hda ...
Formattazione partizione di SWAP.../dev/hda2
Attivazione partizione di SWAP...
Creazione partizione ext3 Creazione file system /dev/hda3
Montaggio /dev/hda3 partizione dentro /mnt/target ...
Creazione partizione ext3 Creazione file system /dev/hda1
Montaggio /dev/hda1 partizione dentro /mnt/target/boot ...
Creazione partizione ext3 Creazione file system /dev/hda5
Montaggio /dev/hda5 partizione dentro /mnt/target/usr ...
Creazione partizione ext3 Creazione file system /dev/hda6
Montaggio /dev/hda6 partizione dentro /mnt/target/home ...
Creazione partizione ext3 Creazione file system /dev/hda7
```

Installation of the NBLade system on your Hard Disk.

Installation usually takes about 10 minutes. If the percentage indicator in the lower right of the screen does not change after a few minutes, restart and redo the above procedure. *The block is probably due to a hardware or compatibility problem.*

- Installation STEP 5

```
Attivazione DMA ... /etc/init.d/bootmisc.sh
Attivazione interfaccia di rete (/etc/network/interfaces)
Attivazione Hostname (/etc/hosts, /etc/hostname, /etc/mailname)
Attivazione DNS (/etc/resolv.conf)
Using /etc/sysconfig/i18nGenerazione file di Boot
Making a "real" /tmp (chmod 1777 /tmp)
Making /etc/mtabVerifica File
Impostazione password root /
Creazione Directory home per gli utenti
Creazione Directory root (/etc/aliases)
Attendere ... initrd Fatto ... boot.img
Ottimizzazione LILO ambiente chroot

Fase 4 : Attivazione Servizi
NBLADE Lancio script :
Step 5 : Fine Installazione
Smontaggio partizione ...
Smontaggio partizione Root ...
Installazione Completata !
```

Now the installation is complete,
When installation is complete, the server will automatically be restarted, so remove the Nblade CD.



- Installation STEP 6

CAREFUL: The NBlade system will start up with the IP address 192.168.1.1 ; to modify this address, go to Step 8.

Start-up of your server with the Nblade system.



This is the system check, service check and license check step.

```
Global System NONE Version 2.00.47 - 2.6.13 - NB-P2
Configurate il sistema NONE con browser Internet Explorer
superiore alla versione 5.5 o Firefox all'indirizzo URL:
https://192.168.1.1:1518

      Display
##### [ 22-01-2006 14:13 ] #####
# LICENZA NON ATTIVA #
# 22-01-2006 14:12>Reload interfacce #
# 22-01-2006 14:13>Aggiorno server web #
#####

      Stato Sistema
-----
CPU      ***** 2 % | LAN TX ***** 0 % | WAN TX ***** 0 %
RAM      ## ***** 18 % | LAN RX ***** 0 % | WAN RX ***** 0 %
DMZ TX   ***** 0 % | LAN1 TX ***** 0 % | LAN2 TX ***** 0 %
DMZ RX   ***** 0 % | LAN1 RX ***** 0 % | LAN2 RX ***** 0 %
-----
[Cli: ?] - [Lic: ?] - [Vendor: ?]
```

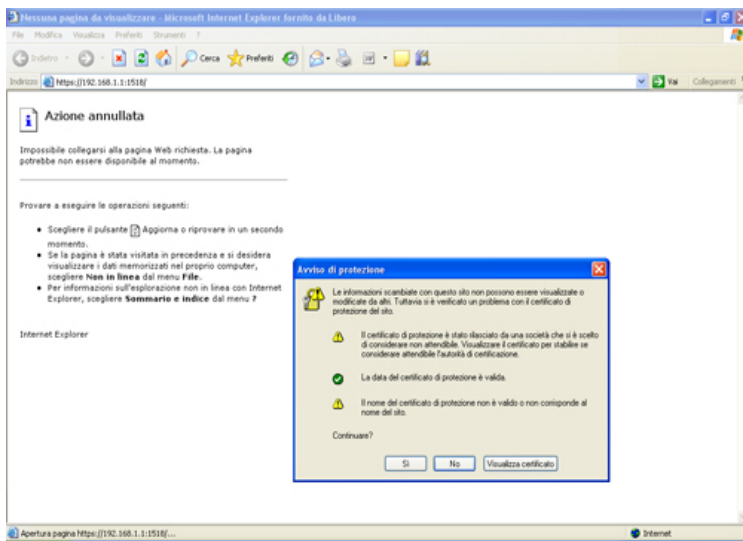
Now the installation of NBlade is complete and the server is operative.



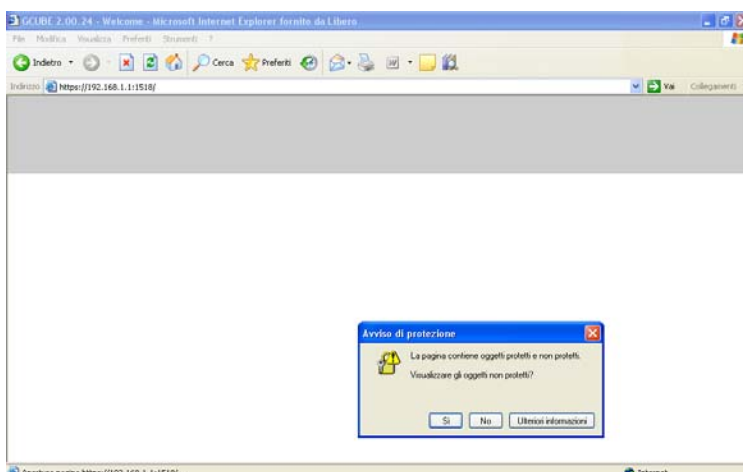
- Installation STEP 7

Open an internet browser and type the address <https://192.168.1.1:1518> to enter the management console of the Nblade system.

Click "Yes" to accept the protection alert.

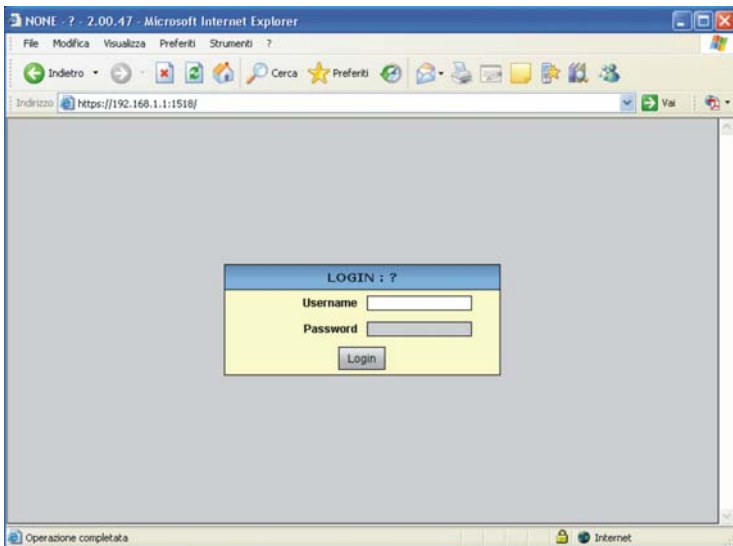


Click "Yes" to see "Non-protected objects".





Type Username “admin” and Password “admin” to enter the management console.



Click on “Login”.

- Installation STEP 8

Change the IP address for the management console.

Type Alt+F2



Insert as user: “admin”
And as password: “admin” (the user administration password)

Page 8 of 13 Ver 2.02



The **RESCUE** console will open.

```

Castellini Alex          RESCUE MENU          14:20
┌───────────────────────────────────────────┐
│                                     │
│          MAIN MENU                  │
│          ────────────              │
│ [1] Setup console ip               │
│ [2] Open firewall rules            │
│ [3] Load rescue point              │
│ [4] Voip console                   │
│                                     │
│ [Q] Quit                            │
│                                     │
│ ┌─┘ ┌─┘                          │
│ └──┘ └──┘                          │
│                                     │
└───────────────────────────────────────────┘
NBLADE - 2.00.48 - 2.6.13 - NB-P2 - Lic. n° 783623991069 - 01-01-www.gls-net.net

```

To set the new imp address and the Netmask type “1”.

```

Castellini Alex          RESCUE MENU          14:21
┌───────────────────────────────────────────┐
│                                     │
│          IP ADDRESS                 │
│          ────────────              │
│ IP  : 172.31.20.79                 │
│ MASK: 255.255.255.0                │
│                                     │
│ [E] Edit ip                         │
│ [M] Main menu                       │
│                                     │
│ ┌─┘ ┌─┘                          │
│ └──┘ └──┘                          │
│                                     │
└───────────────────────────────────────────┘
NBLADE - 2.00.48 - 2.6.13 - NB-P2 - Lic. n° 783623991069 - 01-01-www.gls-net.net

```

Type “E” to EDIT the IP address and the Netmask.
After every change the start up configuration can be saved in a recovery location.

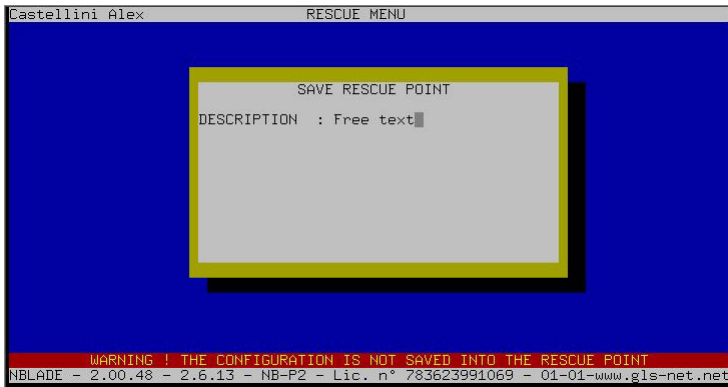
```

Castellini Alex          RESCUE MENU          14:21
┌───────────────────────────────────────────┐
│                                     │
│          MAIN MENU                  │
│          ────────────              │
│ [1] Setup console ip               │
│ [2] Open firewall rules            │
│ [3] Load rescue point              │
│ [4] Voip console                   │
│                                     │
│ [S] Save rescue point               │
│ [Q] Quit                            │
│                                     │
│ ┌─┘ ┌─┘                          │
│ └──┘ └──┘                          │
│                                     │
└───────────────────────────────────────────┘
WARNING ! THE CONFIGURATION IS NOT SAVED INTO THE RESCUE POINT
NBLADE - 2.00.48 - 2.6.13 - NB-P2 - Lic. n° 783623991069 - 01-01-www.gls-net.net

```



Type "S" to SAVE changes.



We recommend that you type in a description of the changes made (ex. IP LAN changed). Click ENTER to confirm the operation.



Type "Q" to QUIT and save the changes.



- Installation STEP 9

IMPORTANT Changing the Default Root Password of the system

Press Alt+F2

```
NBLADE-GCUBE-ATSCOOL 2.00.47 NB-P2 - 2.6.13
nblade login: root
Password:
You are required to change your password immediately (root enforced)
Changing password for root
(current) UNIX password: _
```

Insert as user: "root"
and as password: "root "

The system will require a change of the default password: type in "root" and press ENTER, then insert a new password made up of eight characters. Retype it to confirm. Type "EXIT" to leave the system.

- Installation STEP 10

License Activation:

The activation system of the license is completely automatic.

Requirements:

- **Product acquisition e-mail confirmation**
- **Internet browser with internet access**

Open an internet browser like in STEP 7 and go to the system menu in the License area.



Click on “License License”.

The screenshot shows the Global System web interface in Microsoft Internet Explorer. The browser address bar shows <https://192.168.1.1:1518/index.scw>. The page has a green status bar at the top with the following log entries: 09-02-2006 03:38, 09-02-2006 03:34>Reload interfaccia, 09-02-2006 03:34>Aggiorno server web, and 09-02-2006 03:34>Save rescue point. The main content area is divided into two sections: "USER MENU" on the left and "SYSTEM LICENSE" on the right. The "SYSTEM LICENSE" section contains a table with the following data:

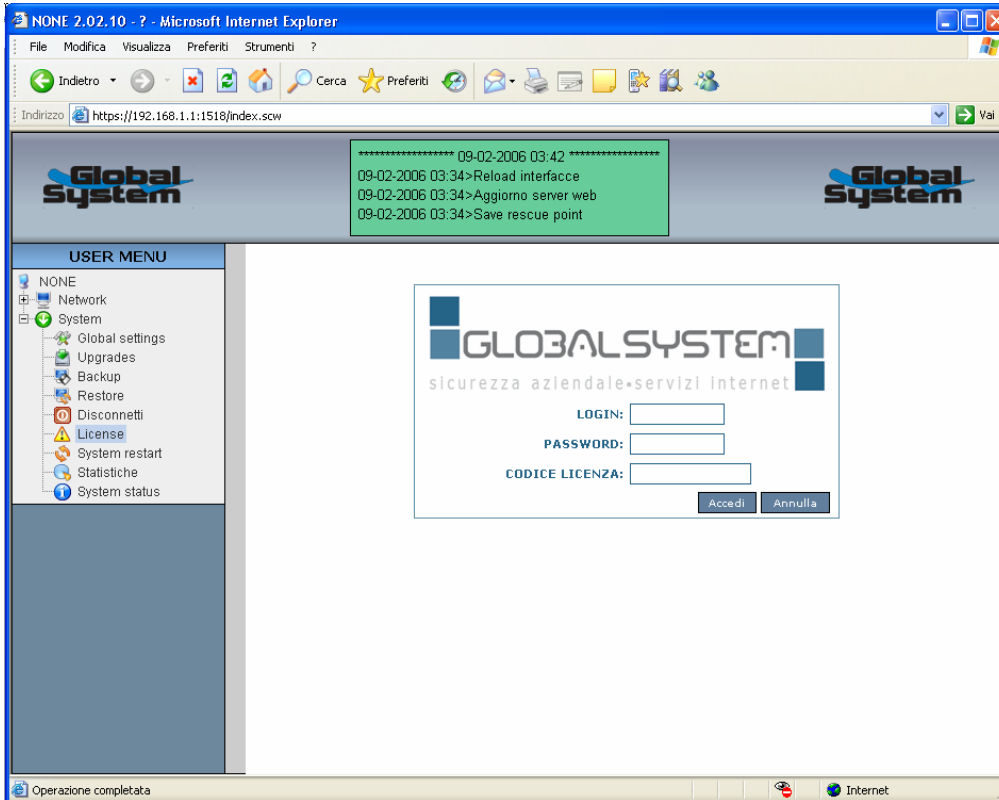
License n°	?	<input type="button" value="Activate license"/>
Licensed to	?	
Validity	?	
Software version	2.02.10 - 2.6.13 - NB-P2	
Last update	<input type="button" value="Verify license"/>	
Backup	<input type="button" value="[Backup - Restore]"/>	

Click on “Activate product with login and license number”

The screenshot shows the Global System web interface after clicking on the "Activate product with login and license number" button. The browser address bar shows <https://192.168.1.1:1518/index.scw>. The page has a green status bar at the top with the following log entries: 09-02-2006 03:40, 09-02-2006 03:34>Reload interfaccia, 09-02-2006 03:34>Aggiorno server web, and 09-02-2006 03:34>Save rescue point. The main content area is divided into two sections: "USER MENU" on the left and "SYSTEM LICENSE" on the right. The "SYSTEM LICENSE" section contains a warning message: "WARNING! Modifications can be done only if an Internet connection is available and working. If you have license number and keys for Global System portal access press on button below to activate license." Below the warning is a green button labeled "Activate product with login and license number". The "Serial" field contains the text: "EZC2CXRP2sk62NDoyFuwk3m8 CRYKERH/a0ZEIDJx3ex4LmH4DF MrckOrX+elr79nt0tr<Jlb8y7009N4 Ff1sbJfng3Cqay4Jl9udHyFMw==". The "Key" field is empty. Below the fields is a button labeled "Activate license manually". A note below the button states: "Manual activation is an operation that can be done only under Global System assistance service signalling." The "Licensed to" field contains a question mark. At the bottom left of the page, it says "Operazione completata".



Fill out the LOGIN, PASSWORD and LICENSE CODE fields (which should be sent to you via e-mail) .



Click on “Accedi” to activate the license.

If the procedure is successful, you will receive the message “Valid Local License”.
In case of errors, check the inserted data or contact assistance.